



RSL 650 L6H5

Packaging Machine Load Cell

RUDRRA SENSOR

The load cell Technology



Product Description

Rudrra Sensor is pronounced manufacturer and supplier of tremendous quality Packaging Machine Load Cell. This product is advanced under the scrupulous examination of our competent experts as per International quality norms. It is widely demanded for their aspect like precise performance & quantification.

Our room of output embody load cells, circuit panel and weighing apparatus. Surveyor avail gain with our application hardware which has been constructed for serenity of installation and obtain best accuracy from our product. Our load cell for packaging machinery can address any application in the food industry, plastic industry, pharamaceuticals and so on. Low profile, large capacity range in the direction of compression and tension, andoized aluminium alloy with silicon shielded cable to resist the forces in measuring area are some specific features of the product.

We follow the best industrial practices, touchstone with globally esteemed manufacturers in this field as regard Quality, firmness, Timely Delivery and Customer satisfaction.

Specifications:

- * Low Profile
- * Large capacity range
- * In the direction of compression and tension
- * Anodized aluminium alloy
- * In measuring area coated with silicon
- * Special shielded cable
- * Off-axis high strength to resist the forces

Application

- * Packaging Machinery



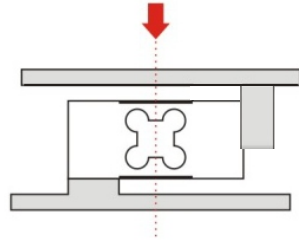
RSL 650 L6H5

Packaging Machine Load Cell

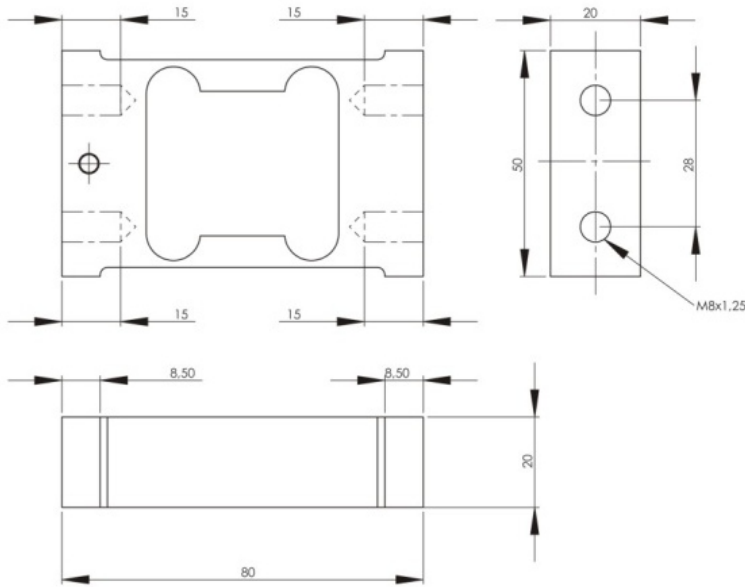
RUDRRA SENSOR

The load cell Technology

Load Application Layout :

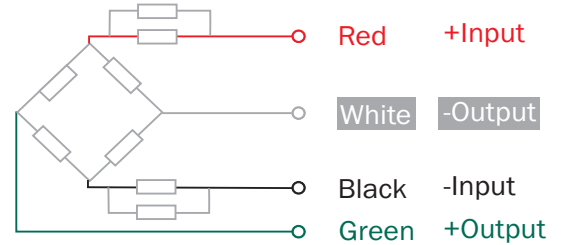


Dimensions :



* All dimension are in mm

Cable Connection Details :



Parameters : (Analog Load Cell)

Capacity / Emax (kg)	4,8,20	Temperature range safe(°C)	-10/+70
Accuracy class	C3	Maximum safe central overload (%R.O)	150
Rated Output (m V/V)	2,0	Ultimate central overload (%R.O)	300
Output impedance(Ω)	350 \pm 3	Excitation (V)	5 VDC - Maximum 15VDC
Insulation resistance (M Ω)	>1000	Construction	anodized aluminium alloy
Minimum dead load output return (%R.O)	< \pm 0,0500	Environment Protection	IP67
Zero Balance (%R.O)	\pm 1	Cable length	0,5 m
Compensated temperature range (°C)	-10/+40	Platform	30x30 cm

