



RSL 309

L-Type Load Cell

RUDRRA SENSOR
The load cell Technology



Product Description

We have with us opulent industry proficiency in favorably handling demands of L-type load cell. We are committed in manufacturing and supplying an expanded spectrum products. These model named RSL 309 are manufactured using qualitative raw material. Our products are tested for all framework. Our In-House multifarious computerized loading stations having the mountable accuracy standards.

Since its inception in 2002, Rudrra Sensor has grown from manufacturing a single product line of thermo couples junction to a deep rooted global leader in the technical marketplace. It is our assurance to quality instrumentality and phenomenal customer service that has endureth keystone of our success, Rudrra priority is clear. Our spontaneitexist to facilitate solutions to your industries.

The L-type load cell is dream up with alloy steel optimal for material testing, overhead and low profile weighing. It is fully sealed with IP67 & IP68. It is very easy to install and for tensile and compression application. It is highly applicable Rope suspended platform for construction industry.

Applications

- * Suitable for Hanging scale
- * Vibratory feeding equipment
- * Tension tension machine
- * Rope suspended platform safely

Key Features

- * Alloy Steel Construction
- * Glue sealing
- * Easy to install and use for both tensile and compression application

Optional :

- * Digital Load cell
- * Customize controller for Rope suspended platform



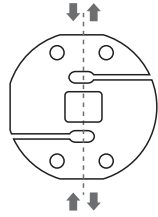
RSL 309

L-Type Load Cell

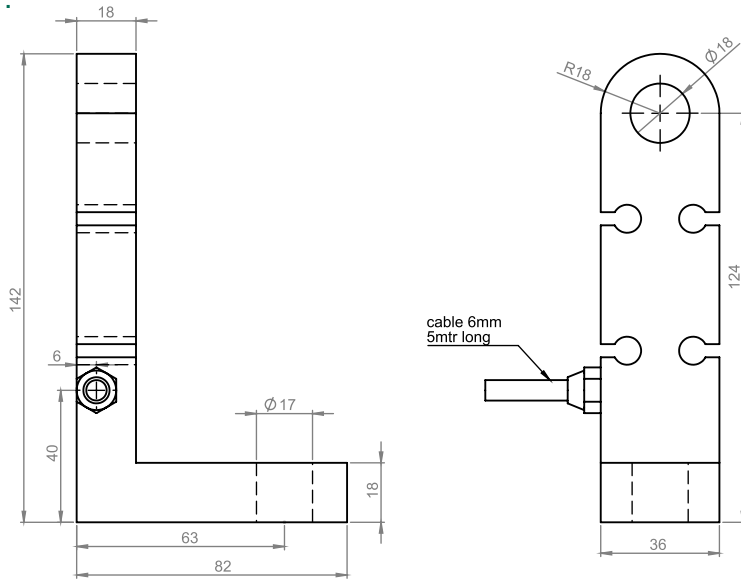
RUDRRA SENSOR

The load cell Technology

Load Application Layout :

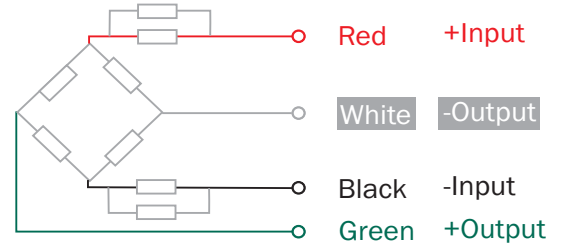


Dimensions :



* All dimension are in mm

Cable Connection Details :



Parameters : (Analog Load Cell)

Rated Load	1.5t	Insulation Resistance	>20000 MΩ
Sensitivity	2± 0.005m V/V	Operating Temp Range	-30 ~+70 °C
Total error	±0.5% F.S	Safe load limit	150% F.S
Creep (30 min)	±0.05% F.S	Over Load Limit	200% F.S
Zero Balance	±1% F.S	Recommend excitation	5-12V DC
Temp. Effect on Zero (%FS/10 °C)	± 0.023	Maximum excitation	15V DC
Temp. Effect on Span (%FS/10 °C)	± 0.02	Protection Class	IP67
Input Resistance	400 ± 10	Construction	Alloy Steel
Output Resistance	350 ± 2	Cable	Length:3m D: 6mm

