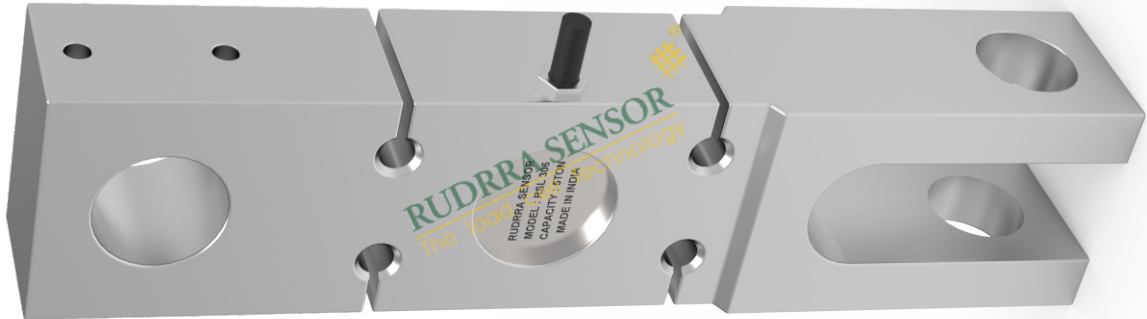


RSL 305

Shackle Type Load Cell



Product Description

Rudrra sensor presents a compact design of Shackle Type Load Cell RSL 305 to its clients. We are offering these cells in both standard as well as custom made form as per convenience of the customers. Our all load cells are highly tested at various parameters to check its bearing capacity, working capacity and many other features. There are two models of this Load cell in demand 100/150 ton Crane Scale.

Applications

- * Conversion of Mechanical Scale to Electronic
- * Tank, Hopper & Bag Weighing
- * Force Measurement Tension & or Compression Dynamometer
- * Hanging & Crane Scale
- * Industrial Automation
- * Bollord Pull test
- * Cargo handling in ship yard

Key Features

- * Environmentally Sealed
- * 1.5, 2, 3, 5, 7.5, 10, 15, 20 TF. Capacities available
- * High Temperature version can be provided on request
- * Standardized output ($3.0 \pm 0.25\%$) available on request

Optional :

- * Digital Load cell
- * Stainless steel structure
- * Customize also available



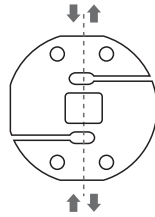
RSL 305

Shackle Type Load Cell

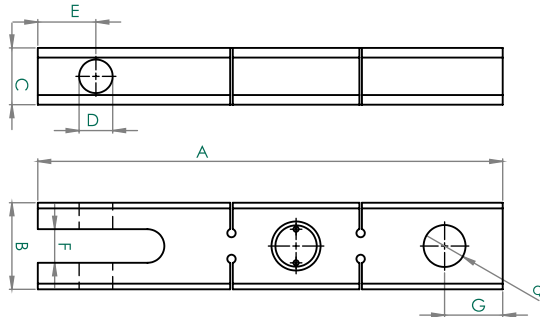
RUDRRA SENSOR

The load cell Technology

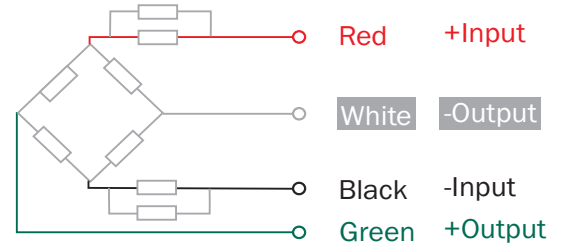
Load Application Layout :



Dimensions :



Cable Connection Details :



CAPACITY	A	B	C	D	d	E	F	G
1t, 2t, 3t	260	50	40	25	26	30	22	30
5t	360	67	44	26	32.5	45	26	45
10t	390	75	52	36	40	45	30	45
20	430	120	70	45	60	60	60	60
50t	600	170	120	85	85	100	80	90

* All dimension are in mm

Parameters : (Analog Load Cell)

Related Load (Ton) 1 / 1.5 / 2 / 5 / 7.5 / 10 / 20			
Precision	C1	Excitation Voltage (V)	5~12 (DC)
Composition Error	± 0.03	Compensated temp. Range (°C)	-10~+40
Rated Output (mv/v)	2.0 ± 0.004	Use Temp. Range (°C)	-10~+40
Creep (%FS/30min)	± 0.03	Temp. Effect on Zero (%FS/10°C)	± 0.023
Zero Balance (%FS)	1.0	Temp. Effect on Span (%FS/10°C)	± 0.017
Input Resistance (Ω)	390 ± 10	Safe Overload (%FS)	150
Output Resistance (Ω)	350 ± 2	Ultimate Overload (%FS)	200
Insulation Resistance (M Ω)	5000	Defend Grade	IP67

