

Model : RSL 304

TENSION LOAD CELL



Features

- * Alloy steel construction
- * Welding sealed to IP67 & Ip68
- * Easy to install and use for both tensile and compression application
- * Also available in stainless steel

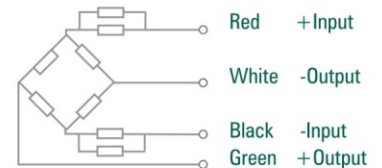
Applications

- * Hanging scale
- * Tension testing machine
- * Vibratory feeding equipment
- * Tank weighing, Hopper weighing etc.

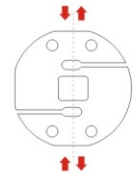
Parameters :

Rated load (Ton) 5 / 7.5 / 10 / 20			
Precision	C2	Excitation Voltage (V)	9~12 (DC)
Composition Error	±0.03	Compensated temp. Range (°C)	-10~+40
Rated Output	3.0 ± 0.004 mv/v	Use Temp. Range	-10~+40 °C
Creep (%FS / 30min)	± 0.03	Temp. Effect on Zero (%FS/10°C)	± 0.023
Zero balance %FS	1.0	Temp. Effect on Span (%FS/10°C)	±0.017
Input resistance (Ω)	390 ± 10	Safe Overload (%FS)	150
Output resistance (Ω)	350 ± 2	Ultimate overload	200 %
Insulation resistance (Ω)	≥ 20000 M	Defend Grade	IP67/IP68

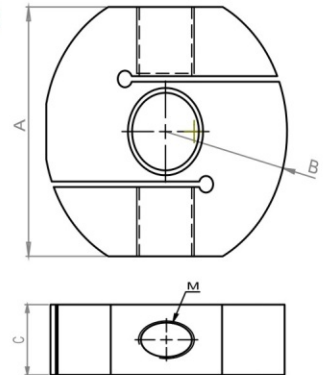
Wiring Schematic Diagram :



Load Diagram :



Dimensions :



CAPACITY	A	B	C	M
5T , 7.5T	90	102	45	M24 * 2mm
10T	135	147	60	M30 * 2mm
15T, 20T	182	198	75	M36 * 3mm

