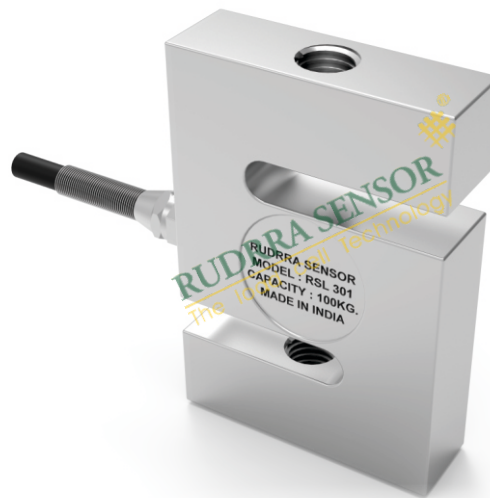


RSL 301

S-Beam Load Cell



Product Description

The S type Load Cell (RSL 301) is one of the best products of Rudrra you can count upon. The features of the product manufactured by the expert engineers at Rudrra are at par with the international standards and the best part is that all the advanced technologies are embedded into one. The following features of the S Beam Load Cell (RSL 301) are sure to convince you that this is one of the best in the industry:

- * Different capacities from 10 kg to 5,000kg.
- * This easy functioning product can be applied in both tension and compression.
- * The product is sealed in glue while the welding has been done keeping in mind the IP67 as well as IP68 standards.
- * The product has been designed with alloy steel finish which calls for its sturdiness and durability.
- * You can easily install it at your workplace for the best performances every time.
- * The product is suitable for applications such as tank and hopper weighing, and it can also be used as a machine that tests tension or compression load.

Applications

- * Suitable for Hanging scale
- * Tension testing machine
- * Vibratory feeding equipment
- * Tank weighing, hopper weighing etc.

Key Features

- * Alloy steel construction
- * Glue sealing and welding to IP67 & IP68
- * Easy to install and use for both tensile and compression application

Optional :

- * Digital Load cell
- * Stainless steel structure
- * Self aligned rod end bearing for hanging application

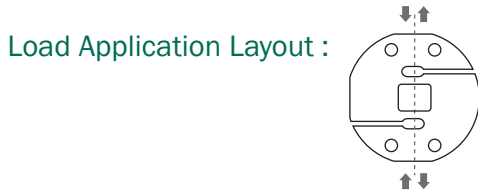


RSL 301

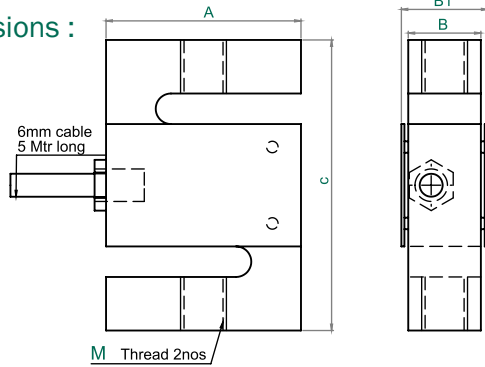
S-Beam Load Cell

RUDRRA SENSOR

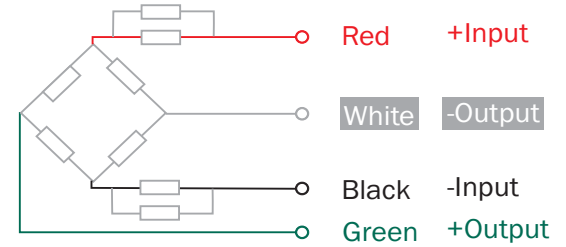
The load cell Technology



Dimensions :



Cable Connection Details :



MODEL	CAPACITY	A	B	B1	C	M
301	10KG TO 100KG	51	13	15	64	M6*1
	100KG TO 300KG	51	19	21	76	M12*1.75
	450KG TO 1500KG	51	19	19	76	M12*1.75
	2000KG TO 5000KG	76	28	28	100	M18*1.5
301A	10KG TO 100KG	51	13	15	64	M6*1
	100KG TO 300KG	51	19	21	76	M12*1.25
	450KG TO 1500KG	51	19	19	76	M12*1.25
	2000KG TO 5000KG	76	28	28	100	M20*1.5
301AD	100KG TO 1000KG	51	19	21	64	M12*1.25

* All dimension are in mm

Parameters : (Analog Load Cell)

Reted Load (kg.) 5 / 10 / 15 / 20 / 50 / 100 / 200 / 300 / 500 / 1000 / 2000 / 3000 / 5000			
Precision	C2	Excitation Voltage (V)	9~12 (DC)
Composition Error	± 0.03	Compensated temp. Range (°C)	-10~+40
Rated Output (mv/v)	2.0 ± 0.05 & 3.0 ± 0.05	Use Temp. Range (°C)	-10~+55
Creep (%FS/30min)	± 0.024	Temp. Effect on Zero (%FS/10°C)	± 0.023
Zero Balance (%FS)	2.0	Temp. Effect on Span (%FS/10°C)	± 0.02
Input Resistance (Ω)	390 ± 10	Safe Overload (%FS)	150
Output Resistance (Ω)	350 ± 2	Ultimate Overload (%FS)	200
Insulation Resistance (M Ω)	5000	Defend Grade	IP67

