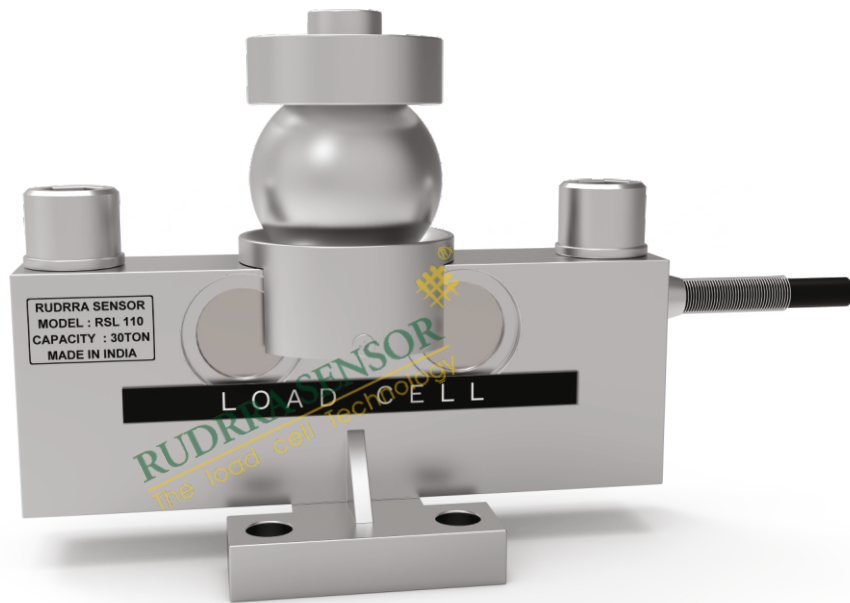


RSL 110

Cup Ball Type Load Cell



Product Description

We are one of the appreciable organizations engaged in offering Double Ended Shear Beam Load Cell RSL 110 which is manufactured using high grade steel. Our products are designed and produced under the supervision of our experts and experienced engineers to provide a perfect solution to the client. We offer easy to install products which have many features such as reliable, durable, long working life, well furnished.

Key Features

- * Alloy steel structure
- * Glue sealing & Welded sealing
- * Nickel plated, Waterproof & anti-corrosion
- * Suitable for multiform environments
- * Suitable for electronic truck scale
- * Other electronic weighing devices

Optional :

- * Digital Load cell
- * Stainless steel structure



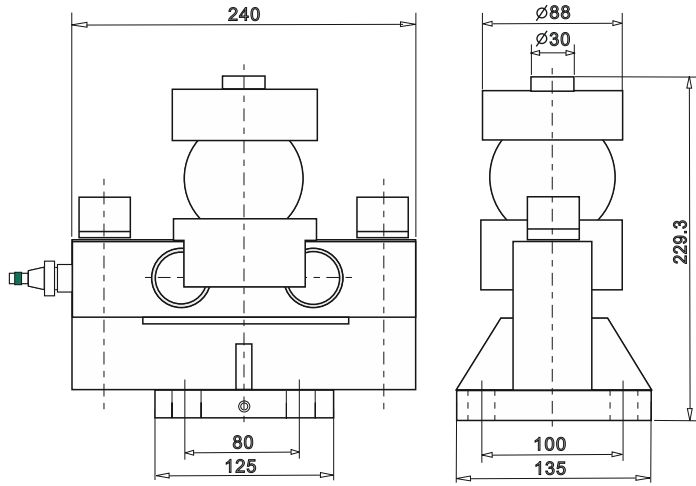
RSL 110

Cup Ball Type Load Cell

RUDRRA SENSOR

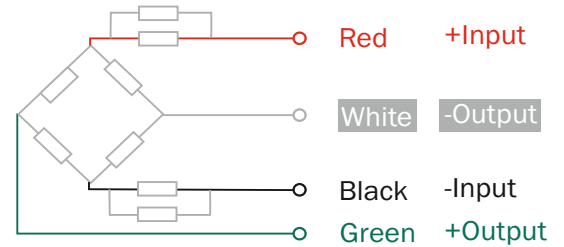
The load cell Technology

Dimensions :

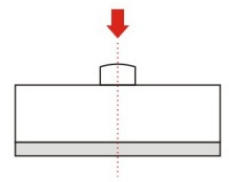


* All dimension are in mm

Cable Connection Details :



Load Application Layout :



Parameters : (Analog Load Cell)

Related Load (Ton) 10 / 20 / 30 / 40	
Precision	C2
Composition Error	± 0.02
Rated Output	2.0 ± 0.002
Creep (%FS/30min)	0.016
Zero Balance (%FS)	± 1.5
Input Resistance (Ω)	750 ± 10
Output Resistance (Ω)	700 ± 5
Insulation Resistance(M Ω)	$\geq 5000(100VDC)$
Excitation Voltage (V)	9~12 (DC)
Compensated temp. Range (°C)	-10~+40
Use Temp. Range (°C)	-20~+55
Temp. Effect on Zero (%FS/10°C)	0.017 / 0.011
Temp. Effect on Span (%FS/10°C)	0.029 / 0.019
Safe Overload (%FS)	120
Ultimate Overload (%FS)	150
Defend Grade	IP66 / IP68

Parameters : (Digital Load Cell)

Related Load (Ton) 10 / 20 / 30 / 40	
Precision	C3
Composition Error	± 0.02
Rated Output	1.00,000 Counts
Creep (%FS/10min)	0.02
Excitation Voltage (V)	5-15 (DC)
Use Temp. Range (°C)	-20~+60
Temp. Effect on Zero (%FS/10°C)	0.019
Temp. Effect on Span (%FS/10°C)	0.011
Safe Overload (%FS)	150
A/D Module Resolution	24 bit (internal)
Communication BPS	9600
Communication Port	485/4 Wire
Digital Refurbishing Frequency	10-80 / S
Maximum of Verification scale Intervals	5000 n max
Max. Communication Range	100 m
No. of Address Bus	8

